

# Hillside Terrace: (Multiple Units)

## NSPIRE Inspection

### NSPIRE



Scheduled: 08/10/2023

Closed: Feb 05 2024

ID: 456959

Score: 88.5

## Inspection Notes

Do not worry about vegetation touching the buildings, however many gutters have vegetation growth. This would be a violation. Recommend leaving tie wraps in all utility rooms. Leave them near timer boxes.

## Scoring Summary - NSPIRE

Units Inspected: 45 HUD Samp. Size: 20	Outside		Inside		Unit		Totals	
	#	Adj Pts	#	Adj Pts	#	Adj Pts	#	Adj Pts
Life Threatening	0	0.00	3	3.63	2	2.67	5	6.30
Severe	0	0.00	3	0.89	3	0.99	6	1.88
Moderate	2	0.20	2	0.22	22	2.69	26	3.11
Low	0	0.00	0	0.00	4	0.21	4	0.21
<b>Totals</b>	<b>2</b>	<b>0.20</b>	<b>8</b>	<b>4.74</b>	<b>31</b>	<b>6.56</b>	<b>41</b>	<b>11.50</b>

<b>Score</b>	88.5* Note: Score is based on the count of units inspected and not the HUD-defined unit sample size
--------------	---

<b>Message</b>	Non-scoring findings excluded from score: (Handrail,Smoke Detectors), Affirmative findings excluded from score, Repeated items within an area excluded from score
----------------	---



# Inspection Results

## Outside

### Building A

Location	Item	Results	Notes	Pic	Date	Fixed	Sev	HUD Pts	Adj Pts	Fix By
Rear of Building	Roof Drain/Ponding	Debris is limiting the ability of water to drain		1	08/14/23 09:34 TK		Mod	0.24	0.10	30D

### Building A Outside NSPIRE Totals

Life Threatening: 0/0      Severe: 0/0      Moderate: 1/0.1      Low: 0/0

### Building F

Location	Item	Results	Notes	Pic	Date	Fixed	Sev	HUD Pts	Adj Pts	Fix By
Front of Building	Tripping Hazard	Tripping hazard - 3/4in. vertical difference	Outside unit 45	2	08/31/23 10:35 TK		Mod	0.24	0.10	30D

### Building F Outside NSPIRE Totals

Life Threatening: 0/0      Severe: 0/0      Moderate: 1/0.1      Low: 0/0

### Community Room

Location	Item	Results	Notes	Pic	Date	Fixed	Sev	HUD Pts	Adj Pts	Fix By
Walkway/Steps	Handrail	Ramp longer than 6 feet missing handrails on both sides	Left side of building		08/14/23 10:48 TK		Low	0.00	0.00 <sup>1</sup>	60D

### Community Room Outside NSPIRE Totals

Life Threatening: 0/0      Severe: 0/0      Moderate: 0/0      Low: 1/0

## Inside

### Building A

Location	Item	Results	Notes	Pic	Date	Fixed	Sev	HUD Pts	Adj Pts	Fix By
Local Systems (Bldg)	Lighting – Auxiliary	Auxiliary lighting component fails to illuminate when tested			08/14/23 09:04 TK		Severe	0.71	0.30	24H
Mechanical/Utility Room	Conductors, Outlets, Switches	Electrical conductor is not properly insulated/enclosed		3	08/14/23 09:08 TK		LT	2.87	1.21	24H

### Building A Inside NSPIRE Totals

Life Threatening: 1/1.21      Severe: 1/0.3      Moderate: 0/0      Low: 0/0

### Building B

Location	Item	Results	Notes	Pic	Date	Fixed	Sev	HUD Pts	Adj Pts	Fix By
Hallways & Corridors (Bldg)	Conductors, Outlets, Switches	Electric outlet inoperable (no visible damage)	Interior stairs to second floor between 9 and 11		08/14/23 10:28 TK		Severe	0.71	0.30	24H
Mechanical/Utility Room	Water Heater	Pressure relief valve terminates higher than 6in. or less than 2in. from the floor		4	08/14/23 11:17 TK		Mod	0.26	0.11	30D

### Building B Inside NSPIRE Totals

Life Threatening: 0/0      Severe: 1/0.3      Moderate: 1/0.11      Low: 0/0

### Building E

Location	Item	Results	Notes	Pic	Date	Fixed	Sev	HUD Pts	Adj Pts	Fix By
Mechanical/Utility Room	Conductors, Outlets, Switches	Electrical conductor is not properly insulated/enclosed		5	08/14/23 13:48 TK		LT	2.87	1.21 <sup>3</sup>	24H
Mechanical/Utility Room	Conductors, Outlets, Switches	Electrical conductor is not properly insulated/enclosed	Timer box	6	08/31/23 09:37 TK		LT	2.87	1.21 <sup>3</sup>	24H

### Building E Inside NSPIRE Totals

Life Threatening: 2/2.42      Severe: 0/0      Moderate: 0/0      Low: 0/0

<sup>1</sup>Non-Scoring <sup>2</sup>Affirmative Non-Scoring <sup>3</sup>Repeat finding within the area (only 1-scored)



# Inspection Results (Continued)

Building F										
Location	Item	Results	Notes	Pic	Date	Fixed	Sev	HUD Pts	Adj Pts	Fix By
Mechanical/Utility Room	Conductors, Outlets, Switches	Electrical conductor is not properly insulated/enclosed	Two timer boxes are not tie wrapped		08/31/23 11:14 TK		LT	2.87	1.21	24H
Mechanical/Utility Room	Light Fixtures (Interior)	A permanently installed light fixture is inoperable	Utility room f		08/31/23 11:12 TK		Mod	0.26	0.11	30D

### Building F Inside NSPIRE Totals

Life Threatening: 1/1.21      Severe: 0/0      Moderate: 1/0.11      Low: 0/0

Community Room										
Location	Item	Results	Notes	Pic	Date	Fixed	Sev	HUD Pts	Adj Pts	Fix By
Laundry Room (Bldg)	GFCI/AFCI	Missing GFCI protection on outlet within Six Feet of water source	Laundry room		08/14/23 08:49 TK		Severe	0.00	0.00 <sup>2</sup>	24H
Mechanical/Utility Room	Lighting – Auxiliary	Auxiliary lighting component fails to illuminate when tested	Lights did not test		08/14/23 08:43 TK		Severe	0.71	0.30	24H

### Community Room Inside NSPIRE Totals

Life Threatening: 0/0      Severe: 2/0.3      Moderate: 0/0      Low: 0/0

## Unit

Building A: Unit A1-1										
Location	Item	Results	Notes	Pic	Date	Fixed	Sev	HUD Pts	Adj Pts	Fix By
Entire Unit	No Issues/Violations	Inspected - No Issues Were Found			08/14/23 13:14			0.00	0.00 <sup>1</sup>	

### Building A: Unit A1-1 Unit NSPIRE Totals

Life Threatening: 0/0      Severe: 0/0      Moderate: 0/0      Low: 0/0

Building A: Unit A1-2										
Location	Item	Results	Notes	Pic	Date	Fixed	Sev	HUD Pts	Adj Pts	Fix By
Entire Unit	No Issues/Violations	Inspected - No Issues Were Found			08/14/23 13:19			0.00	0.00 <sup>1</sup>	

### Building A: Unit A1-2 Unit NSPIRE Totals

Life Threatening: 0/0      Severe: 0/0      Moderate: 0/0      Low: 0/0

Building A: Unit A1-3										
Location	Item	Results	Notes	Pic	Date	Fixed	Sev	HUD Pts	Adj Pts	Fix By
Entire Unit	No Issues/Violations	Inspected - No Issues Were Found			08/14/23 13:25			0.00	0.00 <sup>1</sup>	

### Building A: Unit A1-3 Unit NSPIRE Totals

Life Threatening: 0/0      Severe: 0/0      Moderate: 0/0      Low: 0/0

Building A: Unit A1-4										
Location	Item	Results	Notes	Pic	Date	Fixed	Sev	HUD Pts	Adj Pts	Fix By
Entire Unit	No Issues/Violations	Inspected - No Issues Were Found			08/14/23 13:30			0.00	0.00 <sup>1</sup>	

### Building A: Unit A1-4 Unit NSPIRE Totals

Life Threatening: 0/0      Severe: 0/0      Moderate: 0/0      Low: 0/0

Building A: Unit A2-5										
Location	Item	Results	Notes	Pic	Date	Fixed	Sev	HUD Pts	Adj Pts	Fix By
Bathroom 1	Exhaust System	Bathroom ventilation system is inoperable			08/14/23 09:40 TK		Mod	0.29	0.12	30D

<sup>1</sup>Non-Scoring <sup>2</sup>Affirmative Non-Scoring <sup>3</sup>Repeat finding within the area (only 1-scored)



**Building A: Unit A2-5 Unit NSPIRE Totals**

Life Threatening: 0/0 Severe: 0/0 Moderate: 1/0.12 Low: 0/0

**Building A: Unit A2-6**

Location	Item	Results	Notes	Pic	Date	Fixed	Sev	HUD Pts	Adj Pts	Fix By
Entire Unit	No Issues/Violations	Inspected - No Issues Were Found			08/31/23 15:26			0.00	0.00 <sup>1</sup>	

**Building A: Unit A2-6 Unit NSPIRE Totals**

Life Threatening: 0/0 Severe: 0/0 Moderate: 0/0 Low: 0/0

**Building A: Unit A2-7**

Location	Item	Results	Notes	Pic	Date	Fixed	Sev	HUD Pts	Adj Pts	Fix By
Kitchen	Light Fixtures (Interior)	A permanently installed light fixture is inoperable	Kitchen light over counter in corner is inoperable		08/14/23 09:53 TK		Mod	0.29	0.12	30D

**Building A: Unit A2-7 Unit NSPIRE Totals**

Life Threatening: 0/0 Severe: 0/0 Moderate: 1/0.12 Low: 0/0

**Building A: Unit A2-8**

Location	Item	Results	Notes	Pic	Date	Fixed	Sev	HUD Pts	Adj Pts	Fix By
Entire Unit	No Issues/Violations	Inspected - No Issues Were Found			08/14/23 14:07			0.00	0.00 <sup>1</sup>	

**Building A: Unit A2-8 Unit NSPIRE Totals**

Life Threatening: 0/0 Severe: 0/0 Moderate: 0/0 Low: 0/0

**Building B: Unit B1-10**

Location	Item	Results	Notes	Pic	Date	Fixed	Sev	HUD Pts	Adj Pts	Fix By
Entire Unit	No Issues/Violations	Inspected - No Issues Were Found			08/14/23 14:31			0.00	0.00 <sup>1</sup>	

**Building B: Unit B1-10 Unit NSPIRE Totals**

Life Threatening: 0/0 Severe: 0/0 Moderate: 0/0 Low: 0/0

**Building B: Unit B1-11**

Location	Item	Results	Notes	Pic	Date	Fixed	Sev	HUD Pts	Adj Pts	Fix By
Bathroom 1	Exhaust System	Exhaust system component is damaged or missing.	Mechanic fan make loud squeaking noise		08/14/23 10:22 TK		Mod	0.29	0.12	30D
Bathroom 1	Grab Bar	Any movement whatsoever is detected in the grab bar	Bottom tub grab bar is loose		08/14/23 10:23 TK		Mod	0.29	0.12	30D

**Building B: Unit B1-11 Unit NSPIRE Totals**

Life Threatening: 0/0 Severe: 0/0 Moderate: 2/0.24 Low: 0/0

**Building B: Unit B1-12**

Location	Item	Results	Notes	Pic	Date	Fixed	Sev	HUD Pts	Adj Pts	Fix By
Bathroom 1	GFCI/AFCI	AFCI outlet or AFCI breaker reset button does not test (No visible damage)	Gfi over toilet will not trip has power		08/14/23 10:35 TK		Severe	0.78	0.33	24H

**Building B: Unit B1-12 Unit NSPIRE Totals**

Life Threatening: 0/0 Severe: 1/0.33 Moderate: 0/0 Low: 0/0

**Building B: Unit B1-9**

Location	Item	Results	Notes	Pic	Date	Fixed	Sev	HUD Pts	Adj Pts	Fix By
Bathroom 1	Bathtub/Shower	Bath/Shower inoperable/not draining (another bath present)	Tub slow to drain		08/14/23 10:20 TK		Mod	0.29	0.12	30D

<sup>1</sup>Non-Scoring <sup>2</sup>Affirmative Non-Scoring <sup>3</sup>Repeat finding within the area (only 1-scored)



# Inspection Results (Continued)

## Building B: Unit B1-9 (Continued)

Location	Item	Results	Notes	Pic	Date	Fixed	Sev	HUD Pts	Adj Pts	Fix By
Bathroom 1	Wall Covering and Finish – Interior	Interior wall component(s) is not functionally adequate	Wall Water damage between tub and sink	Z	08/14/23 10:14 TK		Mod	0.29	0.12	30D

### Building B: Unit B1-9 Unit NSPIRE Totals

Life Threatening: 0/0      Severe: 0/0      Moderate: 2/0.24      Low: 0/0

## Building B: Unit B2-13

Location	Item	Results	Notes	Pic	Date	Fixed	Sev	HUD Pts	Adj Pts	Fix By
Kitchen	Light Fixtures (Interior)	A permanently installed light fixture is inoperable	Light out over kitchen sink and rangehood		08/14/23 10:54 TK	X	Mod	0.29	0.12	30D

### Building B: Unit B2-13 Unit NSPIRE Totals

Life Threatening: 0/0      Severe: 0/0      Moderate: 1/0.12      Low: 0/0

## Building B: Unit B2-14

Location	Item	Results	Notes	Pic	Date	Fixed	Sev	HUD Pts	Adj Pts	Fix By
Entire Unit	No Issues/Violations	Inspected - No Issues Were Found			08/14/23 15:08			0.00	0.00 <sup>1</sup>	

### Building B: Unit B2-14 Unit NSPIRE Totals

Life Threatening: 0/0      Severe: 0/0      Moderate: 0/0      Low: 0/0

## Building B: Unit B2-15

Location	Item	Results	Notes	Pic	Date	Fixed	Sev	HUD Pts	Adj Pts	Fix By
Bathroom 1	Toilet	Toilet components are damaged but overall functional	Toilet seat damaged		08/14/23 15:27 TK		Low	0.13	0.05	60D

### Building B: Unit B2-15 Unit NSPIRE Totals

Life Threatening: 0/0      Severe: 0/0      Moderate: 0/0      Low: 1/0.05

## Building B: Unit B2-16

Location	Item	Results	Notes	Pic	Date	Fixed	Sev	HUD Pts	Adj Pts	Fix By
Kitchen	Light Fixtures (Interior)	A permanently installed light fixture is inoperable	Kitchen light over counter corner is out		08/14/23 11:14 TK		Mod	0.29	0.12	30D

### Building B: Unit B2-16 Unit NSPIRE Totals

Life Threatening: 0/0      Severe: 0/0      Moderate: 1/0.12      Low: 0/0

## Building C: Unit C1-17

Location	Item	Results	Notes	Pic	Date	Fixed	Sev	HUD Pts	Adj Pts	Fix By
Bathroom 1	Sink	Control knobs do not activate or deactivate hot and cold water	Sink has low water pressure		08/14/23 11:25 TK		Mod	0.00	0.00 <sup>2</sup>	30D

### Building C: Unit C1-17 Unit NSPIRE Totals

Life Threatening: 0/0      Severe: 0/0      Moderate: 1/0      Low: 0/0

## Building C: Unit C1-18

Location	Item	Results	Notes	Pic	Date	Fixed	Sev	HUD Pts	Adj Pts	Fix By
Bathroom 1	Grab Bar	Any movement whatsoever is detected in the grab bar	Both bathroom grab bars are loose		08/14/23 11:35 TK		Mod	0.29	0.12	30D

### Building C: Unit C1-18 Unit NSPIRE Totals

Life Threatening: 0/0      Severe: 0/0      Moderate: 1/0.12      Low: 0/0

<sup>1</sup>Non-Scoring <sup>2</sup>Affirmative Non-Scoring <sup>3</sup>Repeat finding within the area (only 1-scored)



# Inspection Results (Continued)

## Building C: Unit C1-19

Location	Item	Results	Notes	Pic	Date	Fixed	Sev	HUD Pts	Adj Pts	Fix By
Bathroom 1	Light Fixtures (Interior)	A permanently installed light fixture is inoperable	Bathroom overhead light is out		08/14/23 11:31 TK		Mod	0.29	0.12	30D

### Building C: Unit C1-19 Unit NSPIRE Totals

Life Threatening: 0/0      Severe: 0/0      Moderate: 1/0.12      Low: 0/0

## Building C: Unit C1-20

Location	Item	Results	Notes	Pic	Date	Fixed	Sev	HUD Pts	Adj Pts	Fix By
Bedroom 1	Ceiling Covering and Finishes	Ceiling has signs of structural failure (cracking, small circles, blisters, or nail pops)	Bedroom ceiling has large cracks	g	08/14/23 11:43 TK		Mod	0.29	0.12	30D

### Building C: Unit C1-20 Unit NSPIRE Totals

Life Threatening: 0/0      Severe: 0/0      Moderate: 1/0.12      Low: 0/0

## Building C: Unit C2-21

Location	Item	Results	Notes	Pic	Date	Fixed	Sev	HUD Pts	Adj Pts	Fix By
Entire Unit	No Issues/Violations	Inspected - No Issues Were Found			08/14/23 15:49			0.00	0.00 <sup>1</sup>	

### Building C: Unit C2-21 Unit NSPIRE Totals

Life Threatening: 0/0      Severe: 0/0      Moderate: 0/0      Low: 0/0

## Building C: Unit C2-22

Location	Item	Results	Notes	Pic	Date	Fixed	Sev	HUD Pts	Adj Pts	Fix By
Bathroom 1	Bathtub/Shower	Bath/shower components damaged, missing, or inoperable	Tub faucet drips		08/14/23 12:00 TK		Mod	0.29	0.12	30D

### Building C: Unit C2-22 Unit NSPIRE Totals

Life Threatening: 0/0      Severe: 0/0      Moderate: 1/0.12      Low: 0/0

## Building C: Unit C2-23

Location	Item	Results	Notes	Pic	Date	Fixed	Sev	HUD Pts	Adj Pts	Fix By
Entire Unit	No Issues/Violations	Inspected - No Issues Were Found			08/14/23 15:55			0.00	0.00 <sup>1</sup>	

### Building C: Unit C2-23 Unit NSPIRE Totals

Life Threatening: 0/0      Severe: 0/0      Moderate: 0/0      Low: 0/0

## Building C: Unit C2-24

Location	Item	Results	Notes	Pic	Date	Fixed	Sev	HUD Pts	Adj Pts	Fix By
Bathroom 1	Mold-Like Substances	Moisture damage on a surface from 4 Sq. In. to 1 S.F.(Units)	Caulk needed between tub and wall .... Clean grout on tub walls	g	08/14/23 12:06 TK		Mod	0.29	0.12	30D

### Building C: Unit C2-24 Unit NSPIRE Totals

Life Threatening: 0/0      Severe: 0/0      Moderate: 1/0.12      Low: 0/0

## Building D: Unit D1-25

Location	Item	Results	Notes	Pic	Date	Fixed	Sev	HUD Pts	Adj Pts	Fix By
Bathroom 1	Grab Bar	Any movement whatsoever is detected in the grab bar	Loose beside toilet		08/14/23 12:13 TK		Mod	0.29	0.12	30D
Kitchen	GFCI/AFCI	AFCI outlet or AFCI breaker reset button does not test (No visible damage)	Gfi right of kitchen sink inoperable		08/14/23 12:15 TK		Severe	0.78	0.33	24H

<sup>1</sup>Non-Scoring <sup>2</sup>Affirmative Non-Scoring <sup>3</sup>Repeat finding within the area (only 1-scored)



# Inspection Results (Continued)

## Building D: Unit D1-25 (Continued)

Location	Item	Results	Notes	Pic	Date	Fixed	Sev	HUD Pts	Adj Pts	Fix By
Kitchen	Kitchen Sink	Sink or sink component is damaged or missing (Minor)	Kitchen Faucet leaks at stem		08/14/23 12:17 TK		Low	0.13	0.05	60D

### Building D: Unit D1-25 Unit NSPIRE Totals

Life Threatening: 0/0      Severe: 1/0.33      Moderate: 1/0.12      Low: 1/0.05

## Building D: Unit D1-26

Location	Item	Results	Notes	Pic	Date	Fixed	Sev	HUD Pts	Adj Pts	Fix By
Entire Unit	No Issues/Violations	Inspected - No Issues Were Found			08/14/23 16:27			0.00	0.00 <sup>1</sup>	

### Building D: Unit D1-26 Unit NSPIRE Totals

Life Threatening: 0/0      Severe: 0/0      Moderate: 0/0      Low: 0/0

## Building D: Unit D1-27

Location	Item	Results	Notes	Pic	Date	Fixed	Sev	HUD Pts	Adj Pts	Fix By
Bathroom 1	Sink	Sink stopper missing or inoperable			08/14/23 12:21 TK		Low	0.13	0.05	60D

### Building D: Unit D1-27 Unit NSPIRE Totals

Life Threatening: 0/0      Severe: 0/0      Moderate: 0/0      Low: 1/0.05

## Building D: Unit D1-28

Location	Item	Results	Notes	Pic	Date	Fixed	Sev	HUD Pts	Adj Pts	Fix By
Bathroom 1	Sink	Sink component is damaged or missing	Sink pop up inoperable		08/14/23 12:30 TK		Low	0.13	0.05	60D
Kitchen	Light Fixtures (Interior)	A permanently installed light fixture is inoperable	Rangehood light is out		08/14/23 12:33 TK		Mod	0.29	0.12	30D

### Building D: Unit D1-28 Unit NSPIRE Totals

Life Threatening: 0/0      Severe: 0/0      Moderate: 1/0.12      Low: 1/0.05

## Building D: Unit D2-29

Location	Item	Results	Notes	Pic	Date	Fixed	Sev	HUD Pts	Adj Pts	Fix By
Entry Door	Egress	Obstructed means of egress at a Unit's Entry Door	It would be difficult to get a gurney into unit ....tenant will re arrange furniture	10	08/14/23 13:26 TK		LT	3.16	1.33	24H
Kitchen	Light Fixtures (Interior)	A permanently installed light fixture is inoperable	Light is out over counter in corner		08/14/23 13:30 TK		Mod	0.29	0.12	30D

### Building D: Unit D2-29 Unit NSPIRE Totals

Life Threatening: 1/1.33      Severe: 0/0      Moderate: 1/0.12      Low: 0/0

## Building D: Unit D2-30

Location	Item	Results	Notes	Pic	Date	Fixed	Sev	HUD Pts	Adj Pts	Fix By
Entire Unit	No Issues/Violations	Inspected - No Issues Were Found			08/14/23 17:38			0.00	0.00 <sup>1</sup>	

### Building D: Unit D2-30 Unit NSPIRE Totals

Life Threatening: 0/0      Severe: 0/0      Moderate: 0/0      Low: 0/0

## Building D: Unit D2-31

Location	Item	Results	Notes	Pic	Date	Fixed	Sev	HUD Pts	Adj Pts	Fix By
Entire Unit	No Issues/Violations	Inspected - No Issues Were Found			08/14/23 17:33			0.00	0.00 <sup>1</sup>	

<sup>1</sup>Non-Scoring <sup>2</sup>Affirmative Non-Scoring <sup>3</sup>Repeat finding within the area (only 1-scored)



**Building D: Unit D2-31 Unit NSPIRE Totals**

Life Threatening: 0/0 Severe: 0/0 Moderate: 0/0 Low: 0/0

**Building D: Unit D2-32**

Location	Item	Results	Notes	Pic	Date	Fixed	Sev	HUD Pts	Adj Pts	Fix By
Entire Unit	No Issues/Violations	Inspected - No Issues Were Found			08/14/23 17:42			0.00	0.00 <sup>1</sup>	

**Building D: Unit D2-32 Unit NSPIRE Totals**

Life Threatening: 0/0 Severe: 0/0 Moderate: 0/0 Low: 0/0

**Building E: Unit E1-33**

Location	Item	Results	Notes	Pic	Date	Fixed	Sev	HUD Pts	Adj Pts	Fix By
Entire Unit	No Issues/Violations	Inspected - No Issues Were Found			08/14/23 17:53			0.00	0.00 <sup>1</sup>	

**Building E: Unit E1-33 Unit NSPIRE Totals**

Life Threatening: 0/0 Severe: 0/0 Moderate: 0/0 Low: 0/0

**Building E: Unit E1-34**

Location	Item	Results	Notes	Pic	Date	Fixed	Sev	HUD Pts	Adj Pts	Fix By
Entire Unit	No Issues/Violations	Inspected - No Issues Were Found			08/14/23 18:04			0.00	0.00 <sup>1</sup>	

**Building E: Unit E1-34 Unit NSPIRE Totals**

Life Threatening: 0/0 Severe: 0/0 Moderate: 0/0 Low: 0/0

**Building E: Unit E1-35**

Location	Item	Results	Notes	Pic	Date	Fixed	Sev	HUD Pts	Adj Pts	Fix By
Bathroom 1	Grab Bar	Any movement whatsoever is detected in the grab bar	Tub grab bar is loose		08/14/23 13:57 TK		Mod	0.29	0.12	30D
Bathroom 1	Wall Covering and Finish – Interior	Interior wall component(s) is not functionally adequate	Loose wall tile in shower		08/14/23 13:56 TK		Mod	0.29	0.12	30D

**Building E: Unit E1-35 Unit NSPIRE Totals**

Life Threatening: 0/0 Severe: 0/0 Moderate: 2/0.24 Low: 0/0

**Building E: Unit E1-36**

Location	Item	Results	Notes	Pic	Date	Fixed	Sev	HUD Pts	Adj Pts	Fix By
Entire Unit	No Issues/Violations	Inspected - No Issues Were Found			08/31/23 13:42			0.00	0.00 <sup>1</sup>	

**Building E: Unit E1-36 Unit NSPIRE Totals**

Life Threatening: 0/0 Severe: 0/0 Moderate: 0/0 Low: 0/0

**Building E: Unit E2-37**

Location	Item	Results	Notes	Pic	Date	Fixed	Sev	HUD Pts	Adj Pts	Fix By
Bathroom 1	GFCI/AFCI	Missing GFCI protection on outlet within Six Feet of water source	Light over sink	<u>11</u>	08/31/23 15:23 TK		Severe	0.00	0.00 <sup>2</sup>	24H
Living Room	Smoke Alarms	Smoke Alarm is obstructed	Living room smoke detector missing	<u>12</u>	08/31/23 15:22 TK		LT	0.00	0.00 <sup>1</sup>	24H

**Building E: Unit E2-37 Unit NSPIRE Totals**

Life Threatening: 1/0 Severe: 1/0 Moderate: 0/0 Low: 0/0

**Building E: Unit E2-38**

Location	Item	Results	Notes	Pic	Date	Fixed	Sev	HUD Pts	Adj Pts	Fix By
Alternate Location - See Notes for Details	Door Hardware - Entry (non-fire)	Entry door cannot be secured/locked	Living room door dead bolt inoperable		08/31/23 10:18 TK		Severe	0.78	0.33	24H
Living Room	Egress	The exit discharge is obstructed	Cannot get a gurney into bedroom	<u>13</u>	08/31/23 10:12 TK		LT	3.16	1.33	24H

<sup>1</sup>Non-Scoring <sup>2</sup>Affirmative Non-Scoring <sup>3</sup>Repeat finding within the area (only 1-scored)





**Building E: Unit E2-38 Unit NSPIRE Totals**

Life Threatening: 1/1.33      Severe: 1/0.33      Moderate: 0/0      Low: 0/0

**Building E: Unit E2-39**

Location	Item	Results	Notes	Pic	Date	Fixed	Sev	HUD Pts	Adj Pts	Fix By
Bathroom 1	Ceiling Covering and Finishes	Ceiling has an unstable surface	Ceiling is peeling over tub		08/31/23 09:58 TK		Mod	0.29	0.12	30D
Bathroom 1	GFCI/AFCI	Missing GFCI protection on outlet within Six Feet of water source	Light over sink		08/31/23 09:57 TK		Severe	0.00	0.00 <sup>2</sup>	24H

**Building E: Unit E2-39 Unit NSPIRE Totals**

Life Threatening: 0/0      Severe: 1/0      Moderate: 1/0.12      Low: 0/0

**Building E: Unit E2-40**

Location	Item	Results	Notes	Pic	Date	Fixed	Sev	HUD Pts	Adj Pts	Fix By
Entire Unit	No Issues/Violations	Inspected - No Issues Were Found			08/31/23 14:31			0.00	0.00 <sup>1</sup>	

**Building E: Unit E2-40 Unit NSPIRE Totals**

Life Threatening: 0/0      Severe: 0/0      Moderate: 0/0      Low: 0/0

**Building F: Unit F1-41**

Location	Item	Results	Notes	Pic	Date	Fixed	Sev	HUD Pts	Adj Pts	Fix By
Alternate Location - See Notes for Details	Door Hardware - Entry (non-fire)	Entry door will not open	Bathroom door sticks		08/31/23 10:45 TK		Mod	0.29	0.12	30D
Kitchen	Light Fixtures (Interior)	A permanently installed light fixture is inoperable	Rangehood light is out		08/31/23 10:41 TK		Mod	0.29	0.12	30D

**Building F: Unit F1-41 Unit NSPIRE Totals**

Life Threatening: 0/0      Severe: 0/0      Moderate: 2/0.24      Low: 0/0

**Building F: Unit F1-42**

Location	Item	Results	Notes	Pic	Date	Fixed	Sev	HUD Pts	Adj Pts	Fix By
Kitchen	Cooking Appliance	Cooking range, cooktop, or oven component is missing	Replace drip pans they are rusted ... one has a large hole		08/31/23 10:56 TK		Mod	0.29	0.12	30D

**Building F: Unit F1-42 Unit NSPIRE Totals**

Life Threatening: 0/0      Severe: 0/0      Moderate: 1/0.12      Low: 0/0

**Building F: Unit F1-43**

Location	Item	Results	Notes	Pic	Date	Fixed	Sev	HUD Pts	Adj Pts	Fix By
Entire Unit	No Issues/Violations	Inspected - No Issues Were Found			08/31/23 14:50			0.00	0.00 <sup>1</sup>	

**Building F: Unit F1-43 Unit NSPIRE Totals**

Life Threatening: 0/0      Severe: 0/0      Moderate: 0/0      Low: 0/0

**Building F: Unit F1-44**

Location	Item	Results	Notes	Pic	Date	Fixed	Sev	HUD Pts	Adj Pts	Fix By
Entire Unit	No Issues/Violations	Inspected - No Issues Were Found			08/31/23 15:02			0.00	0.00 <sup>1</sup>	

**Building F: Unit F1-44 Unit NSPIRE Totals**

Life Threatening: 0/0      Severe: 0/0      Moderate: 0/0      Low: 0/0

<sup>1</sup>Non-Scoring <sup>2</sup>Affirmative Non-Scoring <sup>3</sup>Repeat finding within the area (only 1-scored)



# Inspection Results (Continued)

**Building F: Unit F2-45**

Location	Item	Results	Notes	Pic	Date	Fixed	Sev	HUD Pts	Adj Pts	Fix By
Living Room	GFCI/AFCI	Missing GFCI protection on outlet within Six Feet of water source	The outlets on each side of kitchen sink are not gfi protected		08/31/23 11:07 TK		Severe	0.00	0.00 <sup>2</sup>	24H

**Building F: Unit F2-45 Unit NSPIRE Totals**

Life Threatening: 0/0	Severe: 1/0	Moderate: 0/0	Low: 0/0
-----------------------	-------------	---------------	----------

<sup>1</sup>Non-Scoring <sup>2</sup>Affirmative Non-Scoring <sup>3</sup>Repeat finding within the area (only 1-scored)



# Inspection Photos

## Outside

### Building A



1

Building A - Rear of Building - Roof Drain/Ponding - Aug 14 2023 9:34AM - T Knight

### Building F



2

Building F - Front of Building - Tripping Hazard - Aug 31 2023 10:35AM - T Knight  
CAPTION: Outside unit 45

## Inside

### Building A



3

Building A - Mechanical/Utility Room - Conductors, Outlets, Switches - Aug 14 2023 9:08AM - T Knight

## Inspection Photos (Continued)

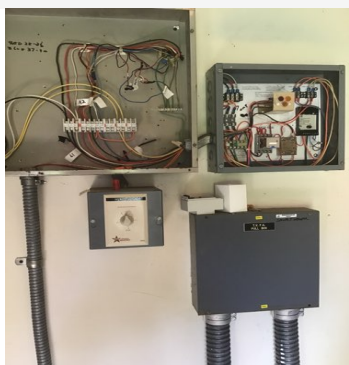
### Building B



4

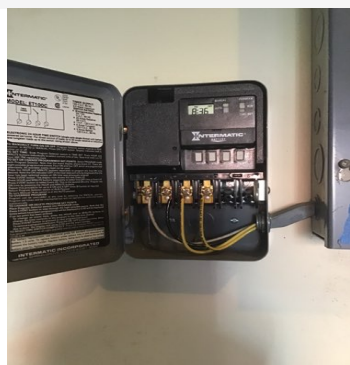
Building B - Mechanical/Utility Room - Water Heater - Aug 14 2023 11:17AM - T Knight

### Building E



5

Building E - Mechanical/Utility Room - Conductors, Outlets, Switches - Aug 14 2023 1:48PM - T Knight



6

Building E - Mechanical/Utility Room - Conductors, Outlets, Switches - Aug 31 2023 9:37AM - T Knight CAPTION: Timer box

## Unit

### Building B: Unit B1-9



Z

Building B Unit B1-9 - Bathroom 1 - Wall Covering and Finish – Interior - Aug 14 2023 10:14AM - T Knight CAPTION: Wall Water damage between tub and sink

## Inspection Photos (Continued)

### Building C: Unit C1-20



8

Building C Unit C1-20 - Bedroom 1 -  
Ceiling Covering and Finishes - Aug 14  
2023 11:43AM - T Knight CAPTION:  
Bedroom ceiling has large cracks

### Building C: Unit C2-24



9

Building C Unit C2-24 - Bathroom 1 -  
Mold-Like Substances - Aug 14 2023  
12:06PM - T Knight CAPTION: Caulk  
needed between tub and wall .... Clean  
grout on tub walls

### Building D: Unit D2-29



10

Building D Unit D2-29 - Entry Door -  
Egress - Aug 14 2023 1:26PM - T Knight  
CAPTION: It would be difficult to get a  
gurney into unit ....tenant will re arrange  
furniture

## Inspection Photos (Continued)

### Building E: Unit E2-37



11

Building E Unit E2-37 - Bathroom 1 - GFCI/AFCI - Aug 31 2023 3:23PM - T Knight CAPTION: Light over sink



12

Building E Unit E2-37 - Living Room - Smoke Alarms - Aug 31 2023 3:22PM - T Knight CAPTION: Living room smoke detector missing

### Building E: Unit E2-38



13

Building E Unit E2-38 - Living Room - Egress - Aug 31 2023 10:12AM - T Knight CAPTION: Cannot get a gurney into bedroom